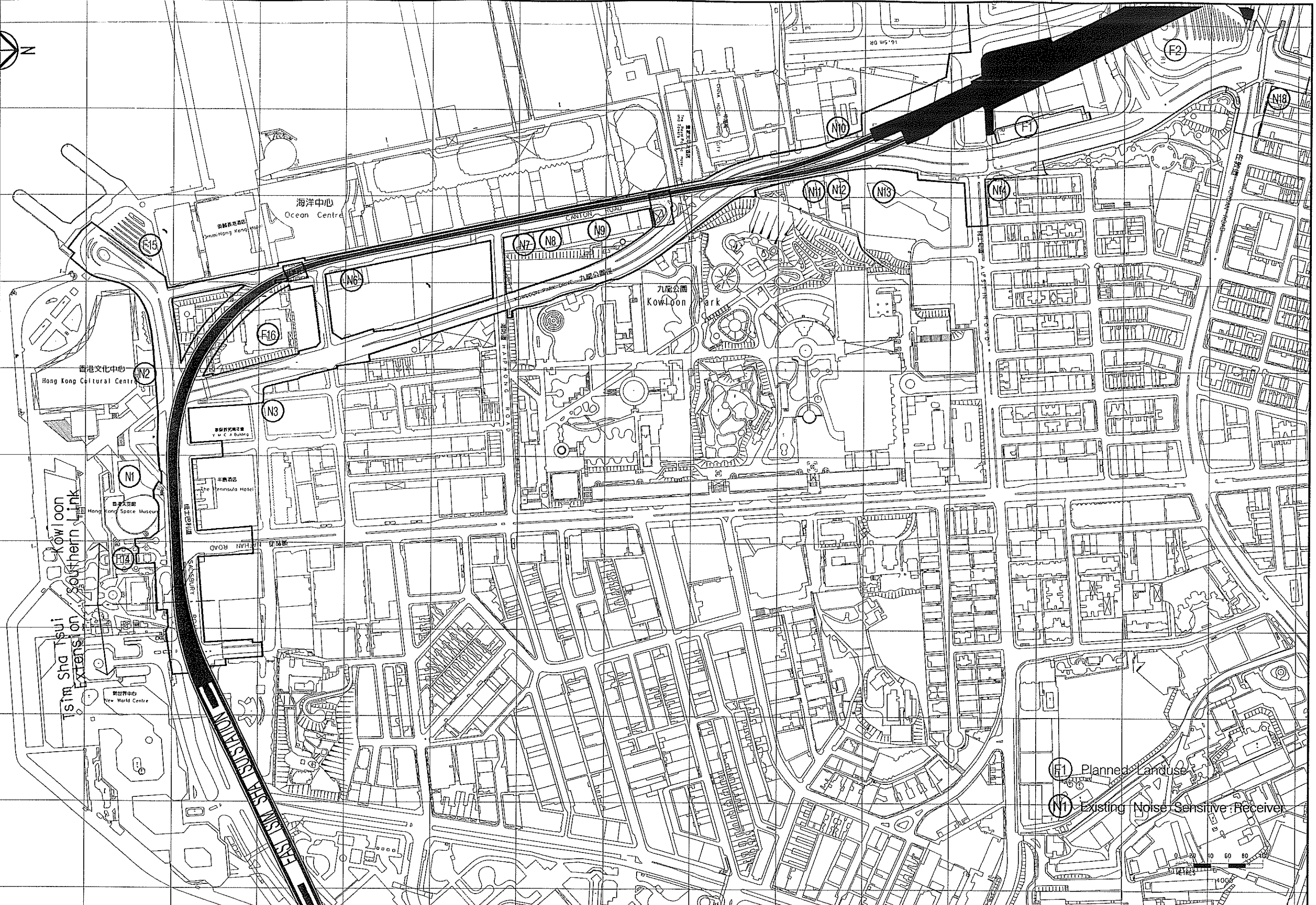


Maps reproduced with permission of The Director of Lands, (C) Hong Kong Government.

FILENAME: c:\env\proj\21573\dr\dwg\3rd EIA-V8\Airborne Noise\Figure-2a.dgn



REV	DATE	BY	SUB	APP	DESCRIPTION
△					
△					
△					
△					
△					
△					
△					
△					
△					
△					
△					
△					

REV	DATE	BY	SUB	APP	DESCRIPTION
△	DEC2003	SW	FC	ST	EIA REPORT
△	NOV2003	SW	FC	ST	EIA REPORT
△	30MAY2003	SW	FC	ST	EIA REPORT
△	7MAR2003	SW	FC	ST	EIA REPORT (2ND DRAFT)
△	11OCT2002	SW	FC	ST	EIA REPORT (1ST DRAFT)

DESIGNED BY	SW
DRAWN BY	RL
CHECKED BY	FC
IN CHARGE	ST
DATE	5 DEC 2003


**New Railway Projects**  
 新鐵路策劃

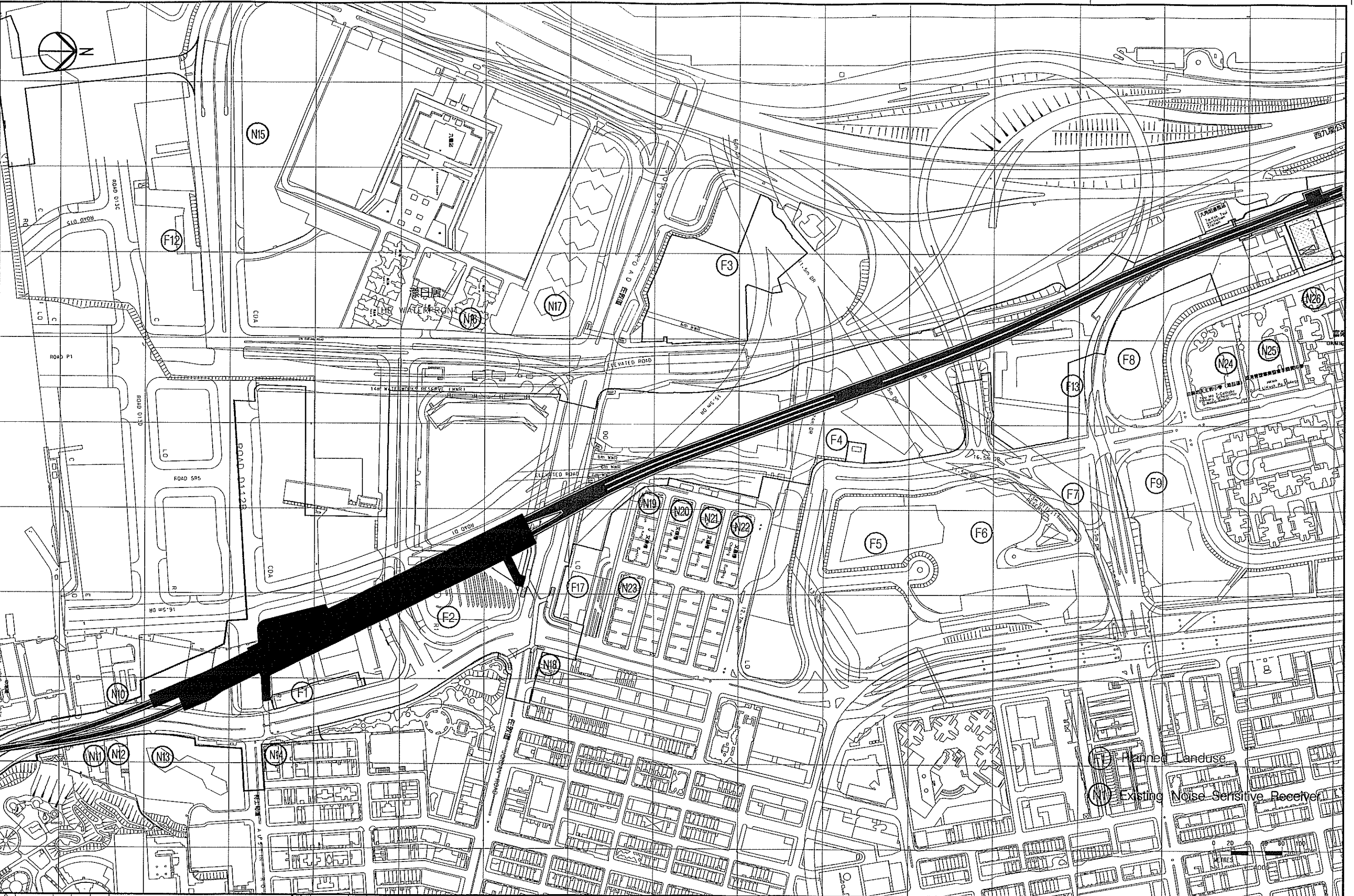
Ove Arup & Partners Hong Kong Limited     **ARUP**

**KOWLOON SOUTHERN LINK KSL GSA-5100**  
**EIA & ASSOCIATED SERVICES**

**LOCATIONS OF**  
**NOISE SENSITIVE RECEIVERS**

CADD FILENAME	CADD DATE
SCALE	1 : 4000 @ A3
DRAWING NUMBER	<b>FIGURE 6-2-1</b>
SHEET NO	1 OF 3
STAGE CODE	P
REV	E

FILENAME: G:\env\project\23573\drawings\3rd Eia-V8\Airborne Noise\TEMP Figure6-2b.dgn  
 Maps reproduced with permission of The Director of Lands, (C) Hong Kong Government.



REV	DATE	BY	SUB	APP	DESCRIPTION
▲	DEC2003	SW	FC	ST	EIA REPORT
▲	NOV2003	SW	FC	ST	EIA REPORT
▲	30MAY2003	SW	FC	ST	EIA REPORT
▲	7MAR2003	SW	FC	ST	EIA REPORT (2ND DRAFT)
▲	11OCT2002	SW	FC	ST	EIA REPORT (1ST DRAFT)

DESIGNED BY	SW
DRAWN BY	RL
CHECKED BY	FC
IN CHARGE	ST
DATE	5 DEC 2003

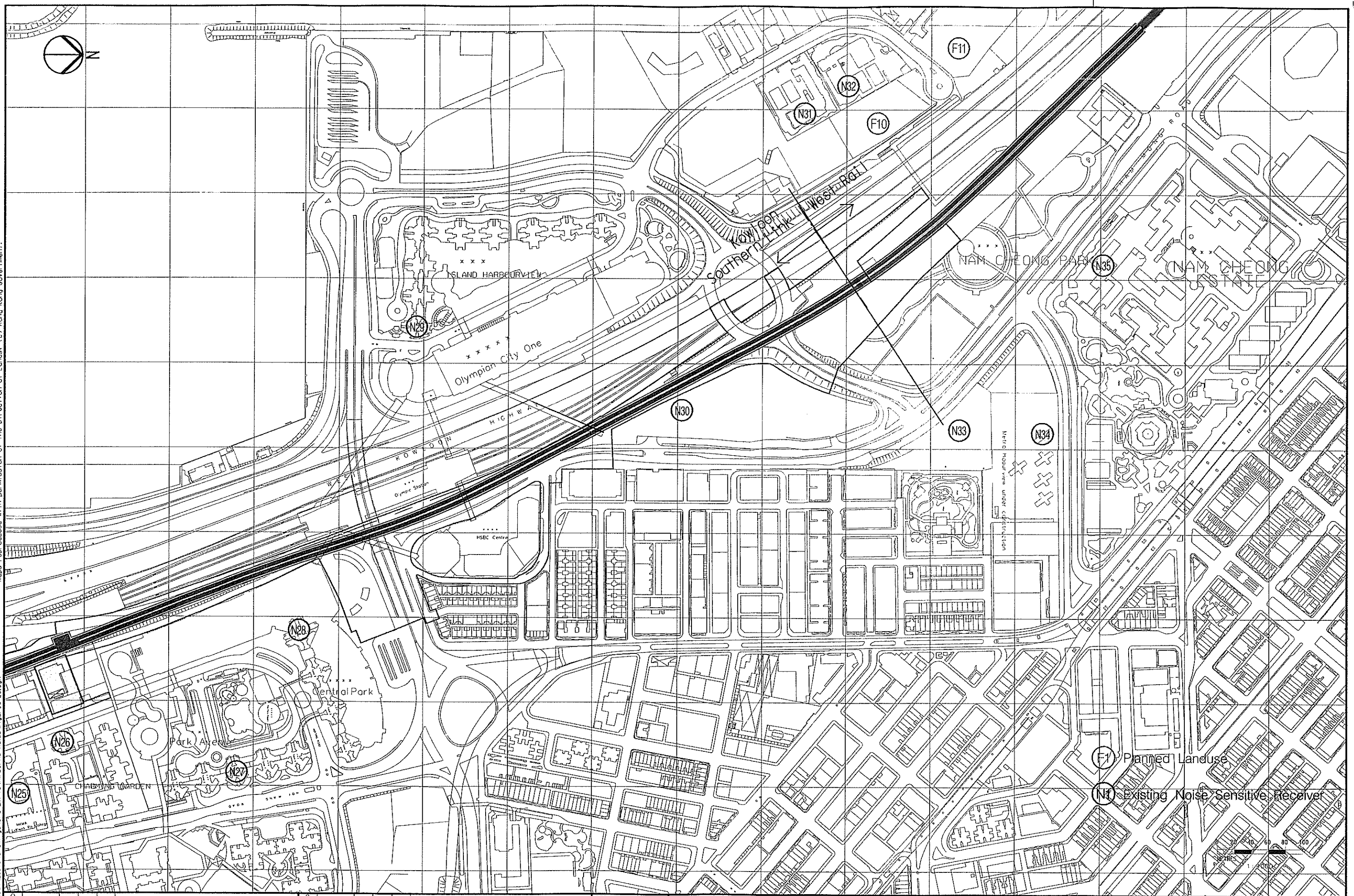

**New Railway Projects**  
 新鐵路策劃  
 Ove Arup & Partners Hong Kong Limited **ARUP**

**KOWLOON SOUTHERN LINK KSL GSA-5100**  
**EIA & ASSOCIATED SERVICES**  
**LOCATIONS OF**  
**NOISE SENSITIVE RECEIVERS**

CADD FILENAME	CADD DATE
SCALE	1 : 4000 e A3
DRAWING NUMBER	<b>FIGURE 6-2-2</b>
SHEET NO	2 OF 3
STAGE CODE	P
REV	E



FILENAME: g:\env\project\23573\drawings\3rd Eia\8\Airborne Noise\Figures-2c.dgn  
 Maps reproduced with permission of The Director of Lands. (C) Hong Kong Government.



REV	DATE	BY	SUB	APP	DESCRIPTION
△	DEC2003	SW	FC	ST	EIA REPORT
△	NOV2003	SW	FC	ST	EIA REPORT
△	30MAY2003	SW	FC	ST	EIA REPORT
△	7MAR2003	SW	FC	ST	EIA REPORT (2ND DRAFT)
△	11OCT2002	SW	FC	ST	EIA REPORT (1ST DRAFT)

DESIGNED BY	SW
DRAWN BY	RL
CHECKED BY	FC
IN CHARGE	ST
DATE	5 DEC 2003

### New Railway Projects

### 新鐵路策劃

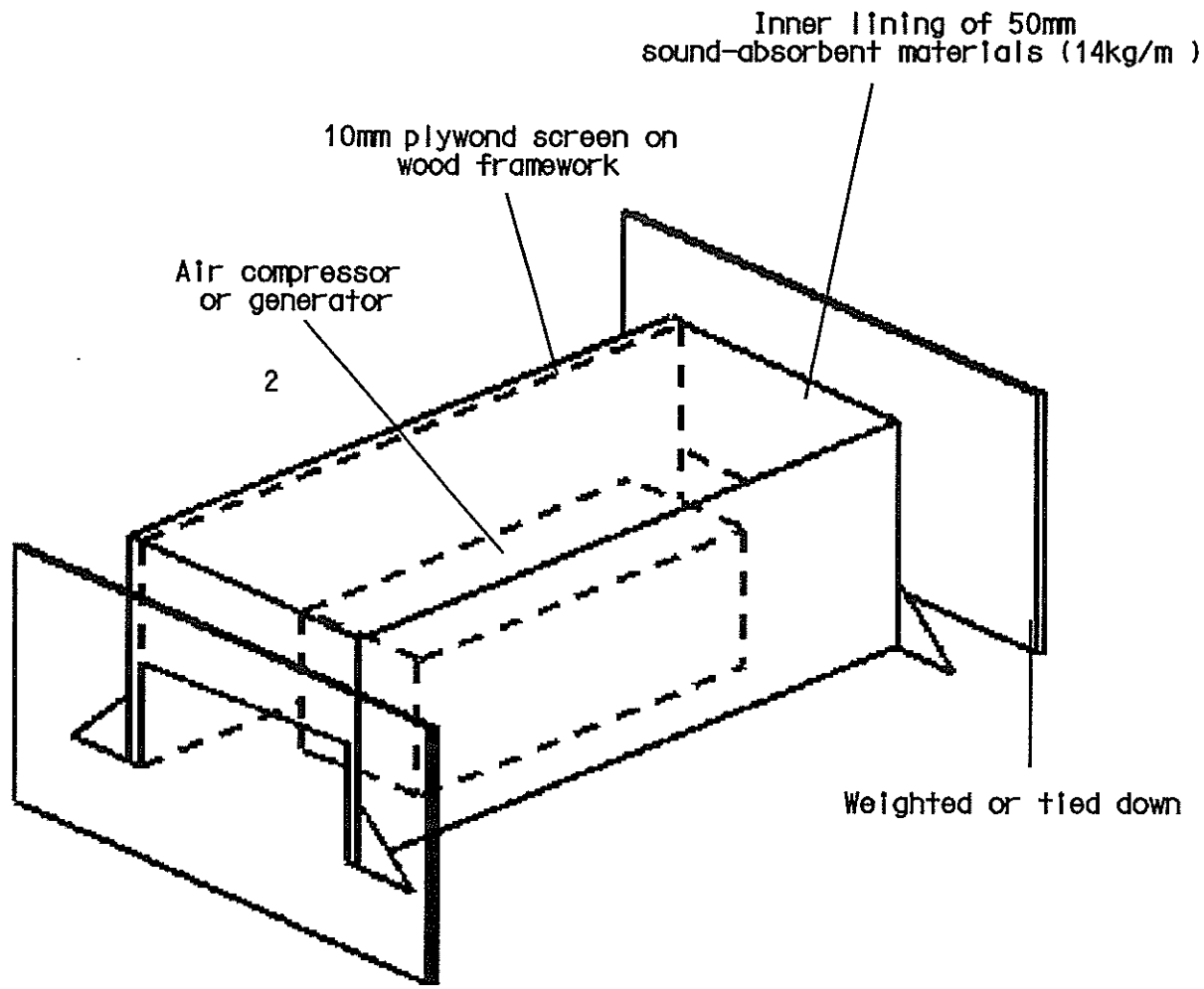
Ove Arup & Partners Hong Kong Limited

**KOWLOON SOUTHERN LINK KSL GSA-5100**

**EIA & ASSOCIATED SERVICES**

**LOCATIONS OF NOISE SENSITIVE RECEIVERS**

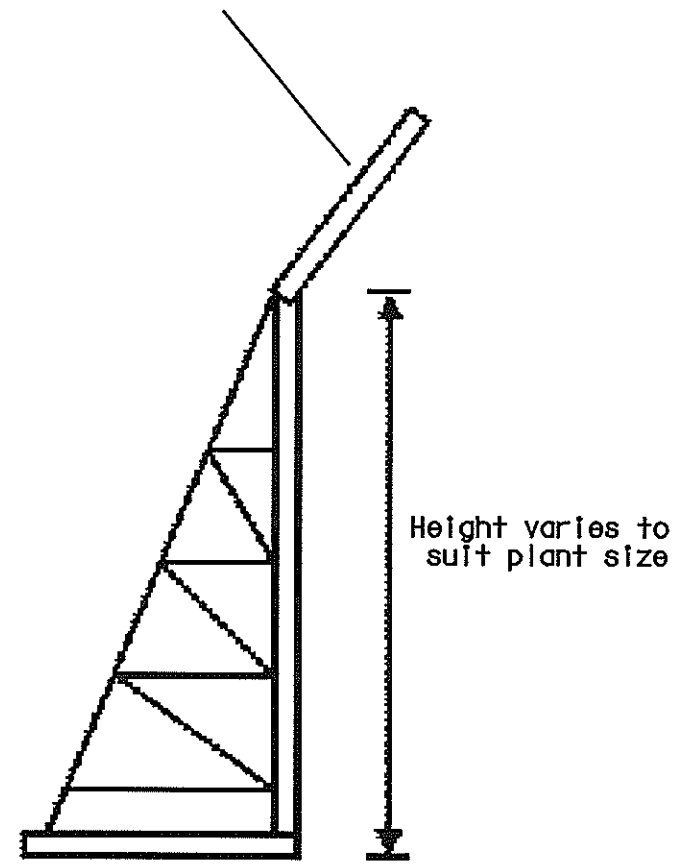
CADD FILENAME	5 DEC 2003
CADD DATE	5 DEC 2003
SCALE	1 : 4000 @ A3
DRAWING NUMBER	<b>FIGURE 6-2-3</b>
SHEET NO	STAGE CODE REV
<b>3 OF 3</b>	<b>P E</b>



Typical Noise Enclosure for Static Plant (e.g. Air Compressors, Generators etc.) ~3-4m tall

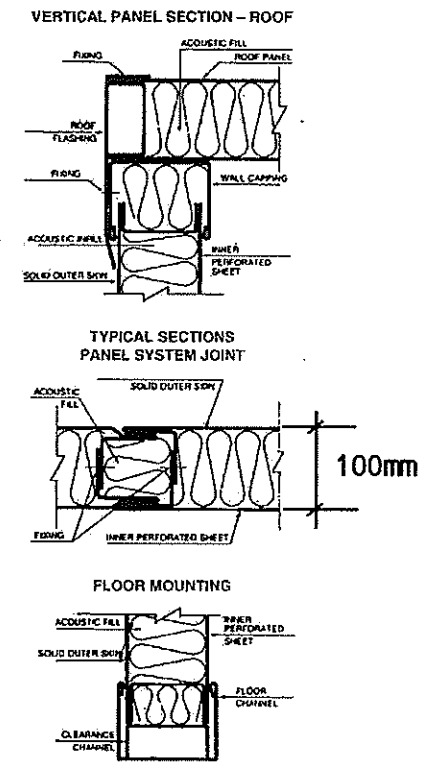
Minimum noise reduction = 10dB(A)

Minimum surface density of 14 kg/m<sup>2</sup>



Typical Temporary Noise Barrier for Mobile Plant (~3-5m tall)

Noise reduction = 5-10dB(A)



Noise Cover for TBM Launching Shaft

Noise reduction = 22dB(A)

REV	DATE	BY	SUB	APP	DESCRIPTION	REV	DATE	BY	SUB	APP	DESCRIPTION

DESIGNED BY	SW
DRAWN BY	JF
CHECKED BY	FC
IN CHARGE	ST
DATE	5 DEC 2003

**KCR** 九廣鐵路

**New Railway Projects**  
新鐵路策劃

Ove Arup & Partners Hong Kong Limited **ARUP**

**KOWLOON SOUTHERN LINK KSL GSA-5100**  
EIA & ASSOCIATED SERVICES

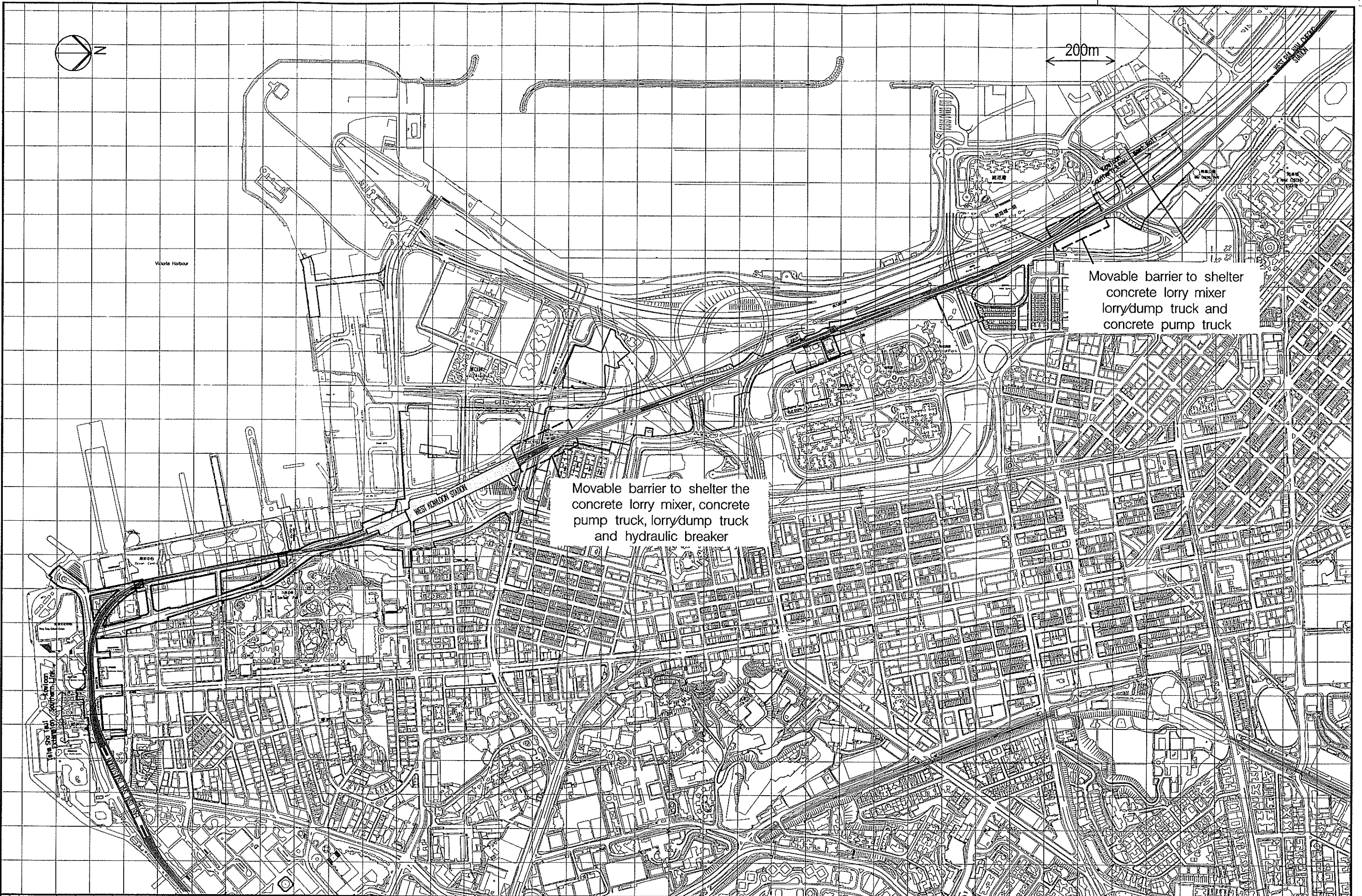
SKETCH OF TYPICAL TEMPORARY NOISE BARRIER / ENCLOSURE

CADD FILENAME	CADD DATE
SCALE	NOT TO SCALE
DRAWING NUMBER	<b>FIGURE 6-3</b>
SHEET NO	STAGE CODE REV
	<b>P E</b>



Maps reproduced with permission of The Director of Lands. (C) Hong Kong Government.

FILENAME: G:\env\proj\23571\drawings\Jrd\_EIA-V8\Fig6\Fig6-4.dgn



200m

Movable barrier to shelter concrete lorry mixer lorry/dump truck and concrete pump truck

Movable barrier to shelter the concrete lorry mixer, concrete pump truck, lorry/dump truck and hydraulic breaker

REV	DATE	BY	SUB	APP	DESCRIPTION

REV	DATE	BY	SUB	APP	DESCRIPTION
△	DEC2003	SW	FC	ST	EIA REPORT
△	NOV2003	SW	FC	ST	EIA REPORT
△	JUNE2003	SW	FC	ST	EIA REPORT
△	7MAR2003	SW	FC	ST	EIA REPORT (2ND DRAFT)
△	11OCT2002	SW	FC	ST	EIA REPORT (1ST DRAFT)

DESIGNED BY	SW
DRAWN BY	JF
CHECKED BY	FC
IN CHARGE	ST
DATE	5 DEC 2003


**New Railway Projects**  
 新鐵路策劃  
 Ove Arup & Partners Hong Kong Limited

**KOWLOON SOUTHERN LINK KSL GSA-5100**  
 EIA & ASSOCIATED SERVICES  
 SPECIFIC MITIGATION MEASURES FOR PARTICULAR PMES AT WORKSITES IN FRONT OF MAN KING BUILDING AND OLYMPIAN CITY PHASE 3

CADD FILENAME	CADD DATE
SCALE	5 DEC 2003
DRAWING NUMBER	1:10000 @ A3
<b>FIGURE 6-4</b>	
SHEET NO	STAGE CODE REV
	P E